

The Living Room Times

All the Nose that's fit to Print

TUESDAY, JANUARY 4, 1994
8:00 AM EDITION

**Let it snow,
Let it sleet,
Let it rain!
EMMA ARRIVES**

Storm a nightmare for commuters, schools

Adollian Weather Service, Play Porch- "Winter Storm Emma is going to create headaches for everyone on the roads and anywhere else for the rest of the day."

Those were the words from Sebastian, Adollian's top meteorologist, who also announced that there is officially a flood watch in Cellar and Cellar Cellar, just in case.

He also said: "This storm has a potential to create a dangerous combination, heavy ice and gale force winds, possibly causing many power outages."

The storm has caused all schools in Outside Adollian to close, as well as many schools around Connecticut, including Brendan's school in Newington.

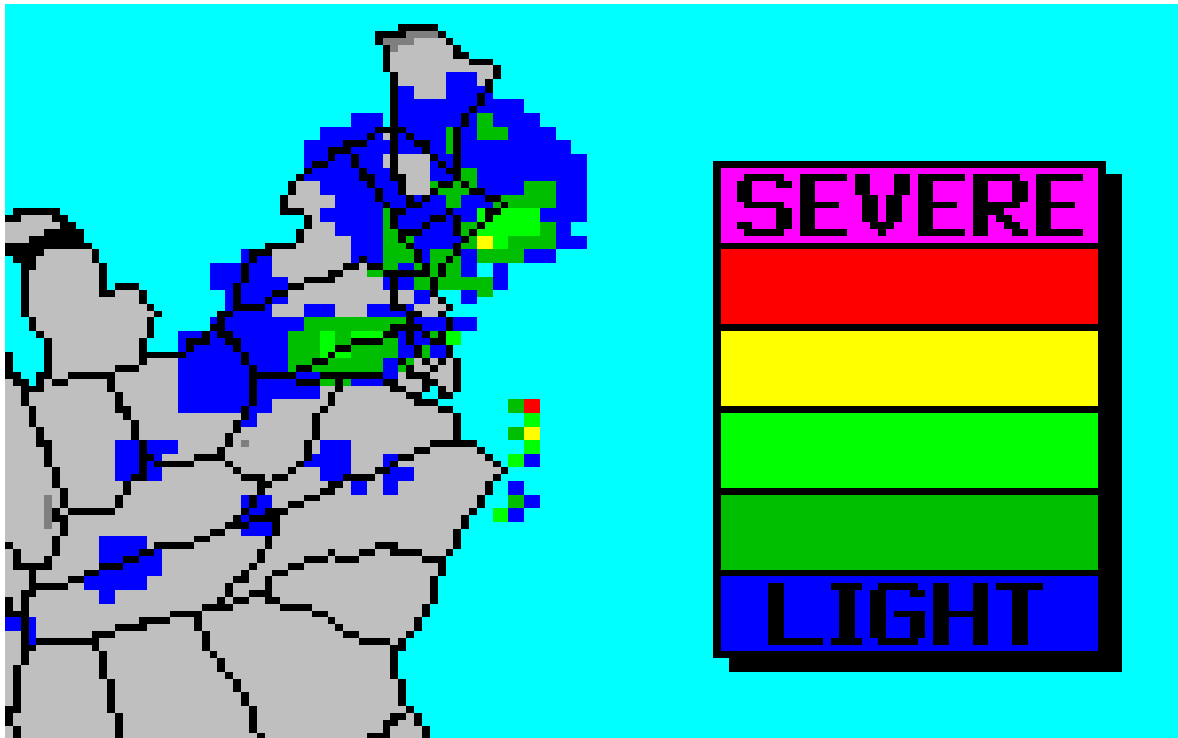
"Newington Public Schools," announced WRCH FM 100.5 this morning, "are also closed for the day."

Leanna will have until 10:00 AM to get to her office at ECSU, where Brendan will likely come along with her and go sledding.

Last night's snow has changed to a messy mixture of snow, sleet, and rain and is expected to continue to be a wintry mix today.

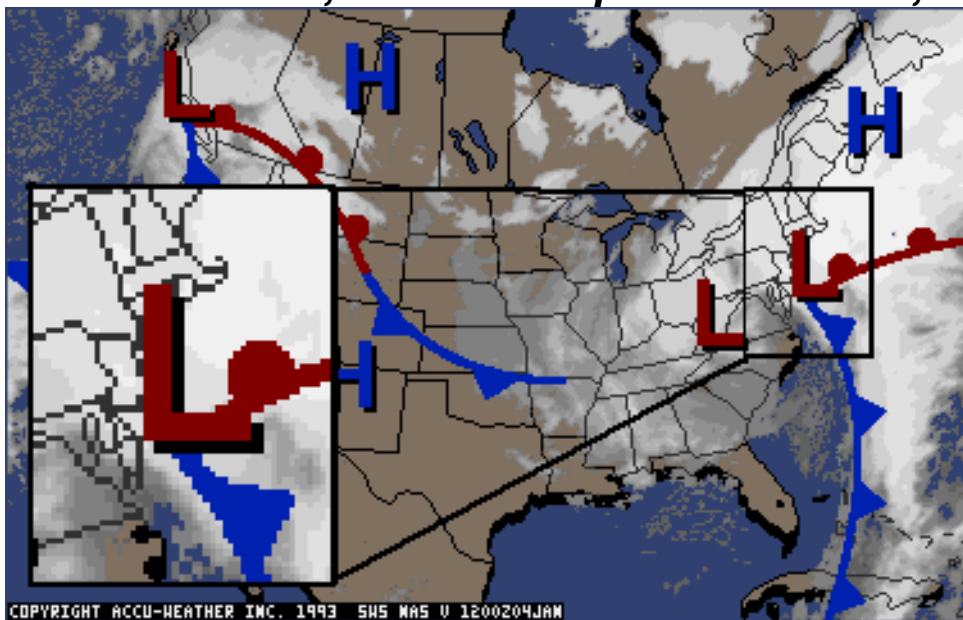
The D.O.T. (Department of Transportation) and the D.D.O.T. (Dolly Department of Transportation) are working hard to get the snow and ice off the road quickly.

"But the best advice," said D.D.O.T. chairveggie Pickle, "is to stay home."



Above: Radar, East Coast, 7:50 AM

Below: Sattelite, with close-up area of Emma, 7:00 AM



TUESDAY, JANUARY 4, 1994
6:00 PM EDITION

STORM LEAVES BEHIND DIL-EMMAS

Storm Emma moves away after dumping snow and sleet on Adollya

E. Green Mountain, Adollya-Winter Storm Emma made sledders and skiers happy, but just about everyone else was left with inconveniences, headaches, and Emma dilemmas.

Snow last night and this morning caused treacherous driving, walking, and pogo-sticking just about everywhere in Connecticut, including the outside regions of Adollya.

4 inches were the rule, but high wind caused drifts across Adollya of up to fourteen inches in a few spots. Dolly power lines in Step 6, Step 7, and Lintace Road Bush were shut down when their connector wire was crushed under the fourteen inch snow drift.

The entire country of Adollya, even inside states, felt the fury of this storm. Evacuees from the county of Sidewalk and the cities of Driveway and Ballwall came into the inside portions of Adollya, spreading out to prevent overcrowding, but the presence of 200 new dollies spread out across the country was felt in each state, especially M+D Room and the other upstairs states already undergoing major population shifts.

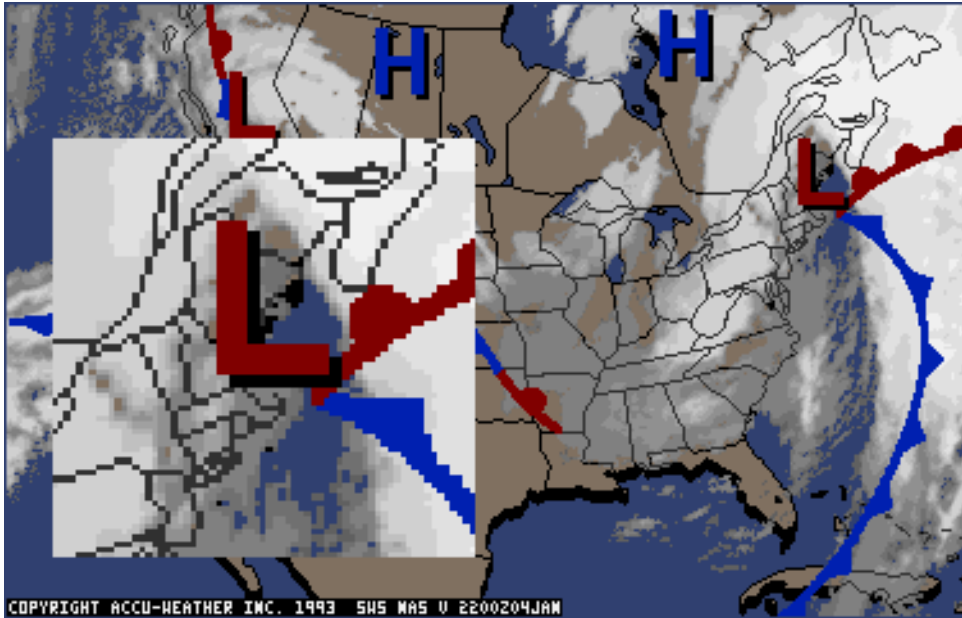
Downstairs Hallway, Laundry Room, and the two cities of Fireplace felt the chill, as did Play Porch this morning.

No flooding was reported in Cellar because the precipitation outside

never changed to rain. When this snow melts, however, there could be another flood.

But the snow may not melt for a while. Temperatures are expected to remain below freezing at least through Sunday with the possible exception of Friday, where the temperature may hover around 32.

"So," said Sebastian of the Adollian Weather Service, "the storm has passed, but bundle up."



***Above: National Sattelite Picture with close-up of Emma
5:00 PM***