

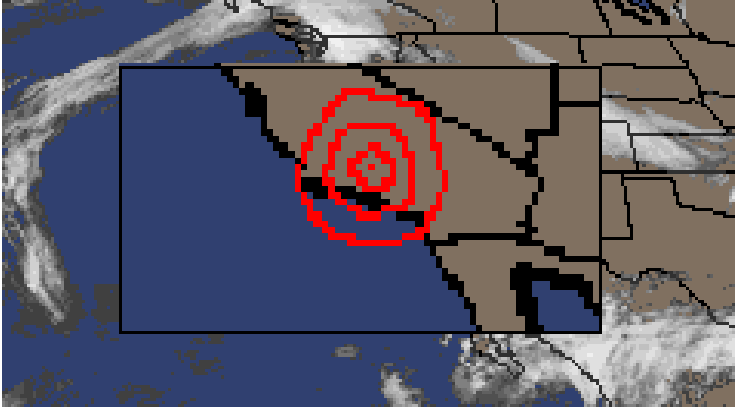
The Living Room Times

All the Nose that's fit to print

MONDAY, JANUARY 17, 1994
8:30 PM EDITION

EARTHQUAKE *IN LA, ICE IN CT*

**Los Angeles Area
Rocked by Major
Earthquake**



Los Angeles, California-At 4:31 AM this morning, a major earthquake registering 6.6 on the richter scale hit southern California, causing structural and emotional devastation from Los Angeles to Adollya.

The earthquake, officials say, was not the long-anticipated "big one," but was big enough to cause major damage across the region.

Facts on Monday's earthquake in Southern California:

Epicenter: Northridge, 20 miles northwest of downtown Los Angeles in San Fernando Valley.

Richter scale reading: 6.6

Time: 4:31 a.m.

Deaths: 24.

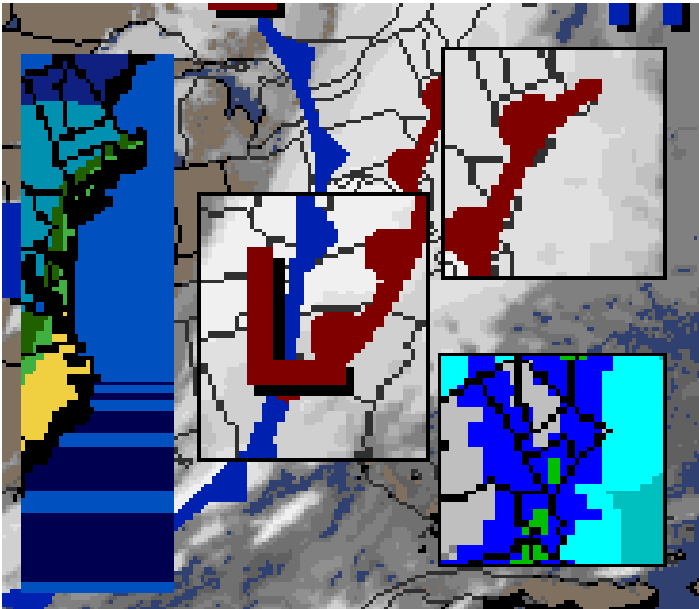
Damage: Buckled overpass of Santa Monica Freeway in Los Angeles; collapsed intersection of two major freeways in the San Fernando Valley -- Interstates 5 and 14, known locally as Golden State and Antelope Valley freeways; freeway bridge also reported damaged on state Route 118, the Simi Valley Freeway; major water and gas lines ruptured; major structural damage.

Fires: Reports of 30-40 homes catching fire near Sylmar at northern end of San Fernando Valley; other fires apparently caused by natural gas pipeline ruptures.

Other: Quake derailed freight train carrying sulfuric acid; briefly closed Los Angeles International Airport; telephone service was lost throughout region and power disrupted as far as Canada.

Scope: Quake felt as far as San Diego, 125 miles south, and Las Vegas, 275 miles east.

Storm Herman brings snow and rain... and now he prepares to turn Adollyya to *ice*.



Adollyyan Weather Service, Play Porch-What would have any other day been the top story on every news station and newspaper today, the arrival of Winter Storm Herman and the shifting of temperatures from teens to forties, was overshadowed by the earthquake in California.

But the storm goes on.

Extremely cold weather over the weekend gave way this afternoon to temperatures in the low forties. This morning's snow turned to rain as temperatures rose, and just about everyone, even weather experts, was surprised.

"We thought the temps would reach thirty or so," said Sebastian of the Adollyan Weather Service. "This storm is very unusual. The winds from the south are so strong that they bring in warm air, overrunning the cold air. We expected that to happen. What we didn't expect was for the air on the surface to warm up so much."

The weather service had predicted an icestorm, and fears of freezing rain have been diminished. However, icy conditions tomorrow morning are still very possible.

"The rain," said Sebastian, "may mix with freezing rain, but as the storm passes and winds turn around to a north direction, then we'll have snow and icing."

**SPECIAL WEATHER STATEMENT
NATIONAL WEATHER SERVICE BOSTON MA
425 PM EST MON JAN 17 1994**

...DANGEROUS TRAVEL CONDITIONS WERE REPORTED IN BOSTON/S NORTHERN AND WESTERN SUBURBS NORTH OF THE MASS PIKE AND WEST OF ROUTE 1 AND INTERSTATE 95 TO THE NEW HAMPSHIRE LINE...

FREEZING RAIN WAS CAUSING ICY ROADS AND NUMEROUS SKIDDING ACCIDENTS FROM NEWBURYPORT AND LYNNFIELD TO MAYNARD WHERE TEMPERATURES WERE IN THE UPPER TEENS.

HOWEVER...ALONG AND SOUTH OF THE MASS TURNPIKE FROM WESTBORO TO BELMONT AND AND BOSTON AS WELL AS NORTH TO SALEM...TEMPERATURES HAD WARMED ABOUT 15 DEGREES BETWEEN 315 AND 415 PM WITH THE MERCURY ZOOMING UP TO BETWEEN 35 AND 40 DEGREES.

NO FURTHER SNOW IS EXPECTED TONIGHT IN SOUTHEAST MASSACHUSETTS FROM SALEM AND BOSTON SOUTH TO THE SOUTH COAST WHERE TEMPERATURES WILL REMAIN ABOVE FREEZING THROUGH ABOUT MIDNIGHT.

HOWEVER...FROM INTERSTATE 495 TO ROUTE 128...TEMPERATURES WILL BRIEFLY RISE TO NEAR 40 EARLY TONIGHT BUT MAY FALL SHARPLY INTO THE 20S NEAR OR JUST AFTER MIDNIGHT. IF THIS OCCURS...ALL ROADS WOULD TURN TO ICE AGAIN NEAR OR JUST AFTER MIDNIGHT FROM WESTBORO TO FRANKLIN AND DEDHAM AS WELL AS IN SALEM AND LYNN.

ALL TRAVEL INTERESTS FROM BOSTON TO WORCESTER ALONG THE MASS PIKE AND NORTH FROM BOSTON TO THE NEW HAMPSHIRE LINE SHOULD BE ALERT FOR RAPIDLY CHANGING AND POTENTIALLY DANGEROUS TRAVEL CONDITIONS TONIGHT.

DRAG

Living Room Christmas Tree taken down

Pine needles spread across Living Room, Downstairs Hallway, Front Yard

Floor, Living Room-The removal of the official Living Room Christmas tree last night marked the end of the Christmas Season in Adollya, and the beginning of the major clean-up effort to, once again, remove the pine needles and get dollies back to their homes.

The tree was finally taken down Sunday night, but the Christmas clean-up effort lead by Santasaurus has only begun. As of this moment, Christmas ornaments and lights remain all over Floor in Living Room, and the Christmas Lights Outside have not been removed yet. But, as usual, the big problem is the tree's needles.

The eastern third of Living Room, as well as almost all of Downstairs Hallway, extreme Southern Dining Room, and the city of Sidewalk in Front Yard are covered with needles. And needles are popping up all over the country as dolly and human feet pick them up and track them everywhere.

"The pine needle clean-up is a combination of responsibility," said Santasaurus, chairdino of Adollya's Christmas set-up and Christmas clean-up. "We do some of it, the Environmental Committee does some of it. It's a cooperative effort."